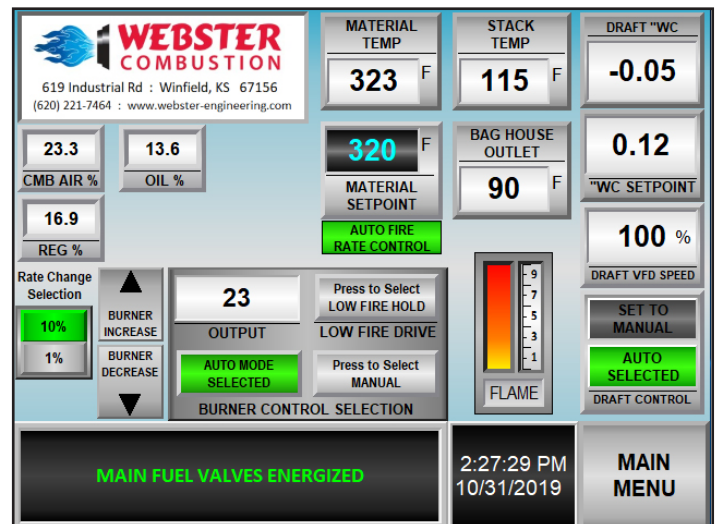
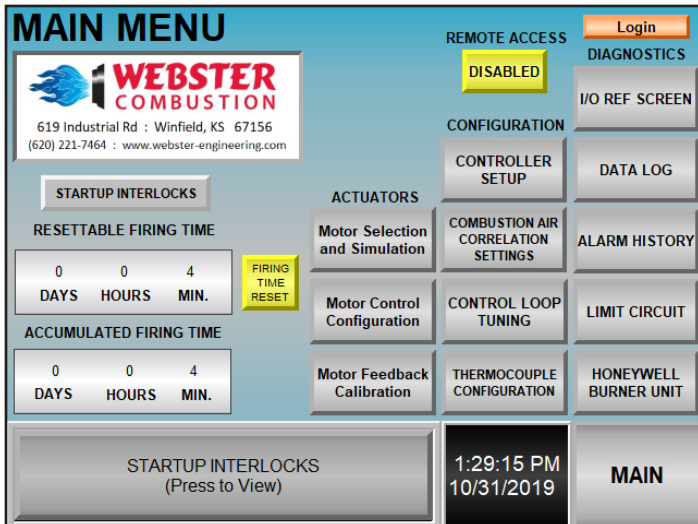


# Asphalt Burner Management System



- Integrated operating system
- Oil, natural gas or combination applications
- Designed specifically for use with the Webster HDRA rotary drying burner
- Manual or automatic burner control
- Manual or automatic draft control (can be used with damper or VFD)
- Ethernet communications



## Hardware

The Webster Asphalt Burner Management System (ABMS) is an integrated operating system that controls a burner firing either oil or natural gas for the process of asphalt manufacturing. The system utilizes an Allen-Bradley CompactLogix Programmable Logic Controller, Allen-Bradley PanelView Plus Human Machine Interface, and a Honeywell Flame Safety Burner Control to achieve process display and control. The ABMS system is available in a stand alone control panel, or can be provided as a drop in to an existing control panel.

## Operation

The ABMS (Asphalt Burner Management System) will provide precise material temperature control in either manual or automatic mode. This allows for optimum performance and emissions control. The system maintains the negative pressure in the drum by controlling the outlet damper of the exhaust fan or through the exhaust fan VFD. The ABMS provides an interface to the system through the HMI and panel push-button switches and acts as the primary point of control. The panel HMI displays setup, diagnostic, and troubleshooting tools to allow the operator full control of the burner, with ethernet communications so you can stay connected from anywhere. Multiple status screens are available in the system for trouble-shooting and the system has continuous data logging which is stored on a hard drive and can be exported through a USB connection.



619 Industrial Road, Winfield, KS 67156  
 Phone: 620-221-7464 / Fax: 620-221-9447  
 sales@webster-engineering.com